

# Mark Reading Systems

## For Press Room Defects

Models 8100, 8200, 9100, 9200-3c

### Edge Mark Reading Systems

#### System Description

RYECO's unique mark reading technology allows you to detect all defect marks and marks for process upsets. The new Model 8100-3c Non-tracking Edge Mark Reading System and the Model 9100-3c Edge Mark Reading System with Tracking can detect defect marks placed on the edge of any moving web.

Aside from the fact that you have reliable and automatic stopping on defects, you also improve sheet quality to the end user and increase production.

RYECO provides a complete system with a reading module and control panel for the Model 8100-3c and an additional actuator with an edge tracking module for the Model 9100-3c. Both systems can detect marks made by water-based or solvent-based dye.

RYECO'S Edge Reading Systems include features designed to reduce maintenance and improve reliability. Modules are specifically manufactured for the printing industry to fit on all presses and are designed with complete modularity and quick disconnects to ensure years of continuous use.

RYECO Incorporated has been providing services and manufacturing specialty paper industry products since 1989. We have over 1500 installations worldwide and a reputation for excellent customer service and top quality products. We offer Edge Crack Detection, Edge Marking and Unwind Control, Sheet Break Detection and Lane Marking Systems.

[www.RYECO.com](http://www.RYECO.com)

810-B Pickens Industrial Dr., Marietta, GA 30062  
Phone: 770.423.0934 Fax: 770.424.2554

#### 8100-3c Jawed Non-tracking Edge Mark Reading System Features

- Detects defect marks on the edge of a moving web and provides a signal to stop the press
- Photo-electric mark reader with simple one-button setup
- Clearly detects marks made by water-based or solvent based dye
- The sensor uses color recognition technology
- Sensor is kept cool and clear with RYECO's patented Air Purge design
- Small "footprint" size and flexible mounting configurations
- Interfaces to any defect management or process control system
- Modules are constructed of 100% stainless steel

#### 8200-3c Jawless Non-tracking Edge Mark Reading System Features

*The 8200-3c Edge Mark Reading System with fixed positioning incorporates the same features as the 8100-3c system with the addition of a unique jawless design.*

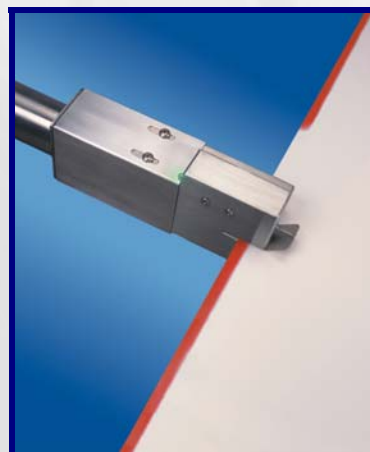
#### 9100-3c Jawed Edge Mark Reading System with Tracking Features

The 9100-3c Edge Mark Reading System with auto-positioning includes all the features of the above Edge Mark Reading System along with the additional features below:

- *Automatically positions the module at the edge of the moving web.*
- *Automatic sheet break retraction*

#### 9200-3c Jawless Edge Mark Reading System with Tracking Features

*The 9200-3c Edge Mark Reading System incorporates the same features as the 9100-3c system with the addition of a unique jawless design.*



Model 9100-3c Mark Reader

